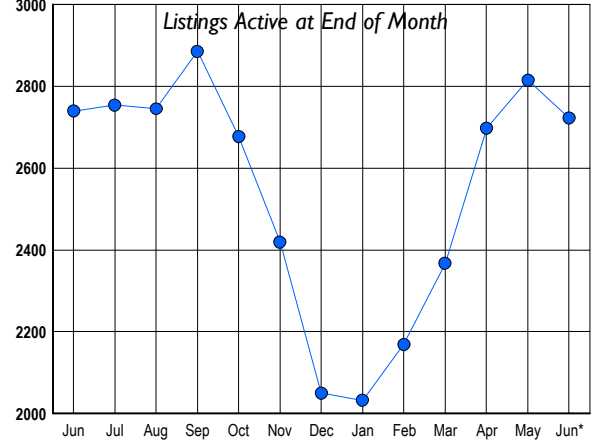


LISTINGS

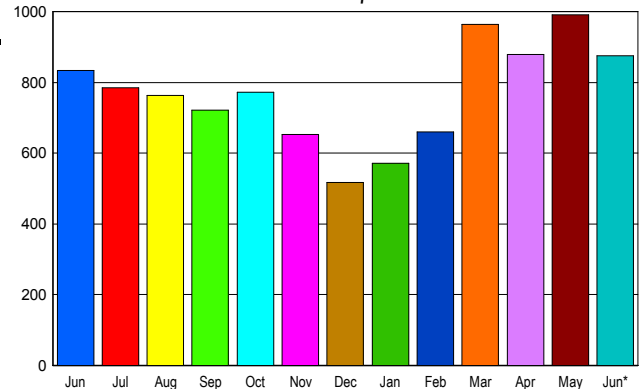
Prices Range	New This Month			Total Actives		
	2011	2010	% Change	2011	2010	% Change
0 - 149,999	20	31	-35.5	34	44	-22.7
150,000 - 199,999	65	57	14.0	103	86	19.8
200,000 - 299,999	172	187	-8.0	350	394	-11.2
300,000 - 399,999	199	216	-7.9	522	545	-4.2
400,000 - 499,999	164	180	-8.9	375	373	0.5
500,000 - 599,999	134	121	10.7	291	268	8.6
600,000 - 699,999	108	117	-7.7	246	233	5.6
700,000 - 799,999	70	69	1.4	163	147	10.9
800,000 - 899,999	43	51	-15.7	116	101	14.9
900,000 - 999,999	38	24	58.3	93	76	22.4
1,000,000 - 1,249,999	41	33	24.2	103	101	2.0
1,250,000 - 1,499,999	40	29	37.9	101	103	-1.9
1,500,000 +	43	58	-25.9	225	268	-16.0
TOTALS	1137	1173	-3.1	2722	2739	-0.6

INVENTORY TREND



SALES TREND

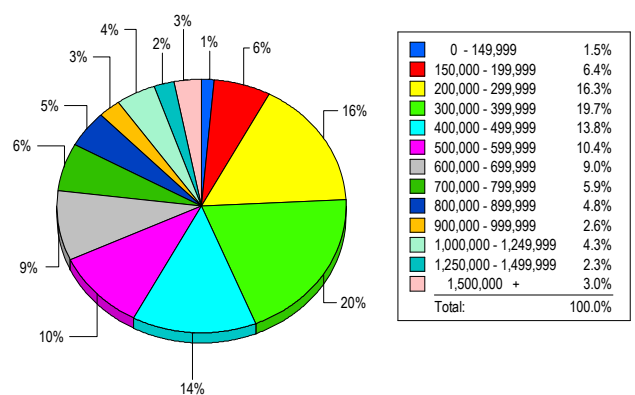
Contracts Ratified Per Month



CONTRACTS

Price Range	New This Month			Year-To-Date		
	2011	2010	% Change	2011	2010	% Change
0 - 149,999	30	30	0.0	176	194	-9.3
150,000 - 199,999	67	66	1.5	366	402	-9.0
200,000 - 299,999	192	158	21.5	904	1,051	-14.0
300,000 - 399,999	156	152	2.6	817	976	-16.3
400,000 - 499,999	111	108	2.8	572	654	-12.5
500,000 - 599,999	68	74	-8.1	426	470	-9.4
600,000 - 699,999	67	72	-6.9	356	413	-13.8
700,000 - 799,999	61	41	48.8	271	256	5.9
800,000 - 899,999	28	32	-12.5	158	193	-18.1
900,000 - 999,999	18	23	-21.7	95	115	-17.4
1,000,000 - 1,249,999	30	34	-11.8	149	128	16.4
1,250,000 - 1,499,999	23	24	-4.2	103	110	-6.4
1,500,000 +	24	20	20.0	131	94	39.4
TOTALS	875	834	4.9	4524	5056	-10.5

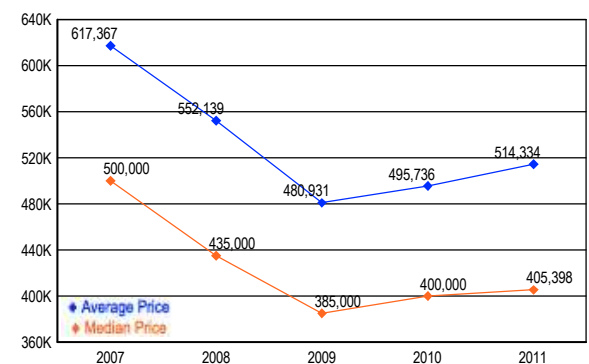
MARKET BY PRICE RANGE



SETTLEMENTS

Price Range	New This Month			Year-to-Date		
	2011	2010	% Change	2011	2010	% Change
0 - 149,999	12	26	-53.8	126	144	-12.5
150,000 - 199,999	52	48	8.3	252	304	-17.1
200,000 - 299,999	132	178	-25.8	725	888	-18.4
300,000 - 399,999	160	185	-13.5	682	873	-21.9
400,000 - 499,999	112	136	-17.6	488	564	-13.5
500,000 - 599,999	84	101	-16.8	351	407	-13.8
600,000 - 699,999	73	96	-24.0	308	324	-4.9
700,000 - 799,999	48	52	-7.7	205	238	-13.9
800,000 - 899,999	39	47	-17.0	141	148	-4.7
900,000 - 999,999	21	23	-8.7	68	83	-18.1
1,000,000 - 1,249,999	35	38	-7.9	135	115	17.4
1,250,000 - 1,499,999	19	19	0.0	67	66	1.5
1,500,000 +	24	20	20.0	93	68	36.8
TOTALS	811	969	-16.3	3641	4222	-13.8

AVERAGE & MEDIAN PRICE



DATA SOURCE: Metropolitan Regional Information Systems, Inc. (MRIS)

NOTES: Properties not listed through this Multiple Listing Service are not reflected. The term "sales" represents ratified purchase contracts. Current year information is preliminary and subject to revision. Current year-to-date contract information may not equal the sum of the monthly contract totals reported in