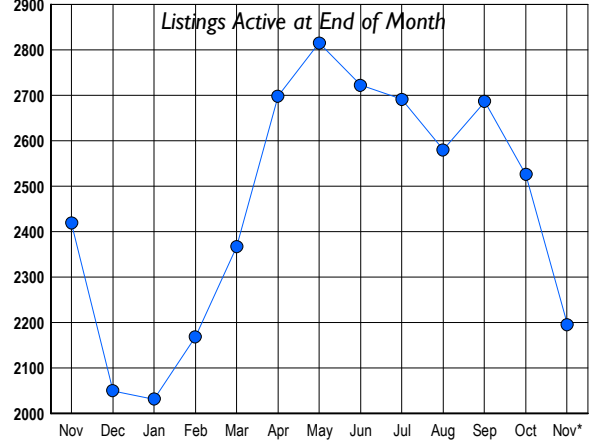




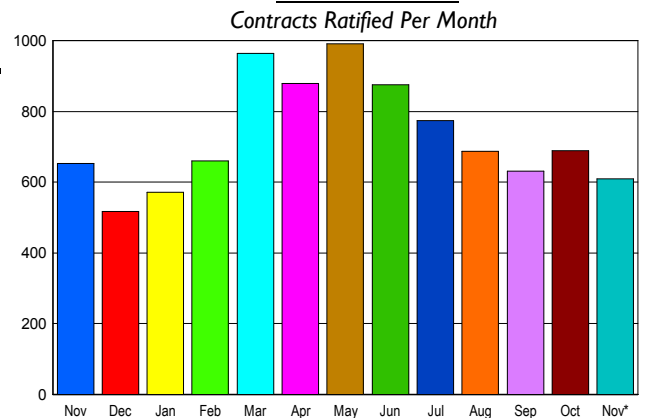
LISTINGS

Prices Range	New This Month			Total Actives		
	2011	2010	% Change	2011	2010	% Change
0 - 149,999	12	17	-29.4	23	59	-61.0
150,000 - 199,999	34	46	-26.1	60	124	-51.6
200,000 - 299,999	107	132	-18.9	297	450	-34.0
300,000 - 399,999	108	121	-10.7	428	470	-8.9
400,000 - 499,999	83	90	-7.8	302	316	-4.4
500,000 - 599,999	74	65	13.8	272	222	22.5
600,000 - 699,999	53	53	0.0	198	176	12.5
700,000 - 799,999	28	34	-17.6	133	110	20.9
800,000 - 899,999	11	20	-45.0	90	79	13.9
900,000 - 999,999	14	19	-26.3	49	64	-23.4
1,000,000 - 1,249,999	19	25	-24.0	91	98	-7.1
1,250,000 - 1,499,999	13	13	0.0	67	72	-6.9
1,500,000 +	22	26	-15.4	186	179	3.9
TOTALS	578	661	-12.6	2196	2419	-9.2

INVENTORY TREND



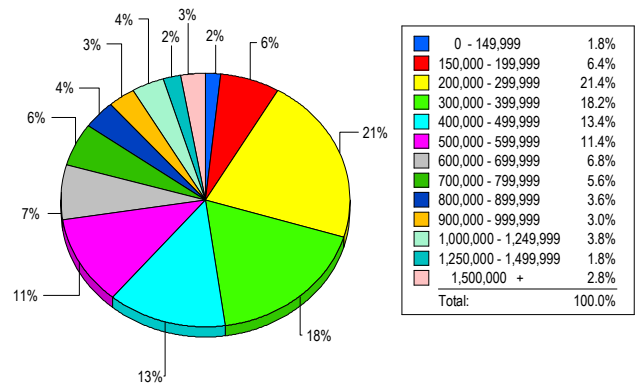
SALES TREND



CONTRACTS

Price Range	New This Month			Year-To-Date		
	2011	2010	% Change	2011	2010	% Change
0 - 149,999	21	26	-19.2	236	296	-20.3
150,000 - 199,999	44	60	-26.7	553	609	-9.2
200,000 - 299,999	157	159	-1.3	1,527	1,628	-6.2
300,000 - 399,999	128	112	14.3	1,370	1,490	-8.1
400,000 - 499,999	66	70	-5.7	894	1,053	-15.1
500,000 - 599,999	47	62	-24.2	702	782	-10.2
600,000 - 699,999	42	49	-14.3	566	677	-16.4
700,000 - 799,999	33	30	10.0	416	421	-1.2
800,000 - 899,999	19	25	-24.0	260	311	-16.4
900,000 - 999,999	18	13	38.5	172	178	-3.4
1,000,000 - 1,249,999	13	14	-7.1	239	218	9.6
1,250,000 - 1,499,999	11	15	-26.7	166	179	-7.3
1,500,000 +	11	19	-42.1	198	184	7.6
TOTALS	610	654	-6.7	7299	8026	-9.1

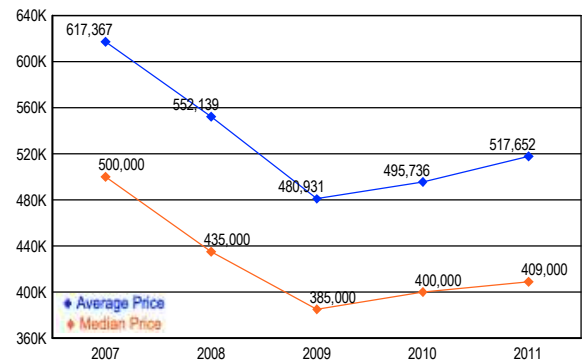
MARKET BY PRICE RANGE



SETTLEMENTS

Price Range	New This Month			Year-to-Date		
	2011	2010	% Change	2011	2010	% Change
0 - 149,999	9	20	-55.0	208	258	-19.4
150,000 - 199,999	32	22	45.5	459	515	-10.9
200,000 - 299,999	107	114	-6.1	1,327	1,521	-12.8
300,000 - 399,999	91	106	-14.2	1,261	1,445	-12.7
400,000 - 499,999	67	59	13.6	876	995	-12.0
500,000 - 599,999	57	54	5.6	662	715	-7.4
600,000 - 699,999	34	59	-42.4	539	622	-13.3
700,000 - 799,999	28	35	-20.0	392	429	-8.6
800,000 - 899,999	18	24	-25.0	250	270	-7.4
900,000 - 999,999	15	14	7.1	161	164	-1.8
1,000,000 - 1,249,999	19	20	-5.0	258	230	12.2
1,250,000 - 1,499,999	9	15	-40.0	134	140	-4.3
1,500,000 +	14	10	40.0	174	146	19.2
TOTALS	500	552	-9.4	6701	7450	-10.1

AVERAGE & MEDIAN PRICE



DATA SOURCE: Metropolitan Regional Information Systems, Inc. (MRIS)

NOTES: Properties not listed through this Multiple Listing Service are not reflected. The term "sales" represents ratified purchase contracts. Current year information is preliminary and subject to revision. Current year-to-date contract information may not equal the sum of the monthly contract totals reported in